

# 1 Functions and Product parameters

- ◆ Real-time tracking
- ◆ against pseudo base-station&detect
- ◆ Vibration/Displacement/Low battery/Power off/over speed alert
- ◆ Main power cut off alert
- ◆ Geo-fence
- ◆ History Route
- ◆ Cut and resume oil remotel
- ◆ AGPS locating

Frequency	GSM 850/900/1800/1900MHz
Networks	GSM/GPRS
Backup Battery	3.7V 370mAh
Operating voltage	9-100V
Location time	Cold start 35s-80s
	Hot start 1s
Location accuracy	5 meters
Operating temperature	-20°C ~+55°C
Dimension	74*25*13mm
Weight	30g

Note: against pseudo base-station&detect function should under power save work mode! The device would wake up when move and speed above 20km/h.

# 2 LED Indicator Definition

## Green Indicator: GPRS

Status of indicator	Meaning
Flash	GSM/GPRS conversation start
Continuously in bright status	No GPRS signal
Green Led off	Power off or in sleep mode

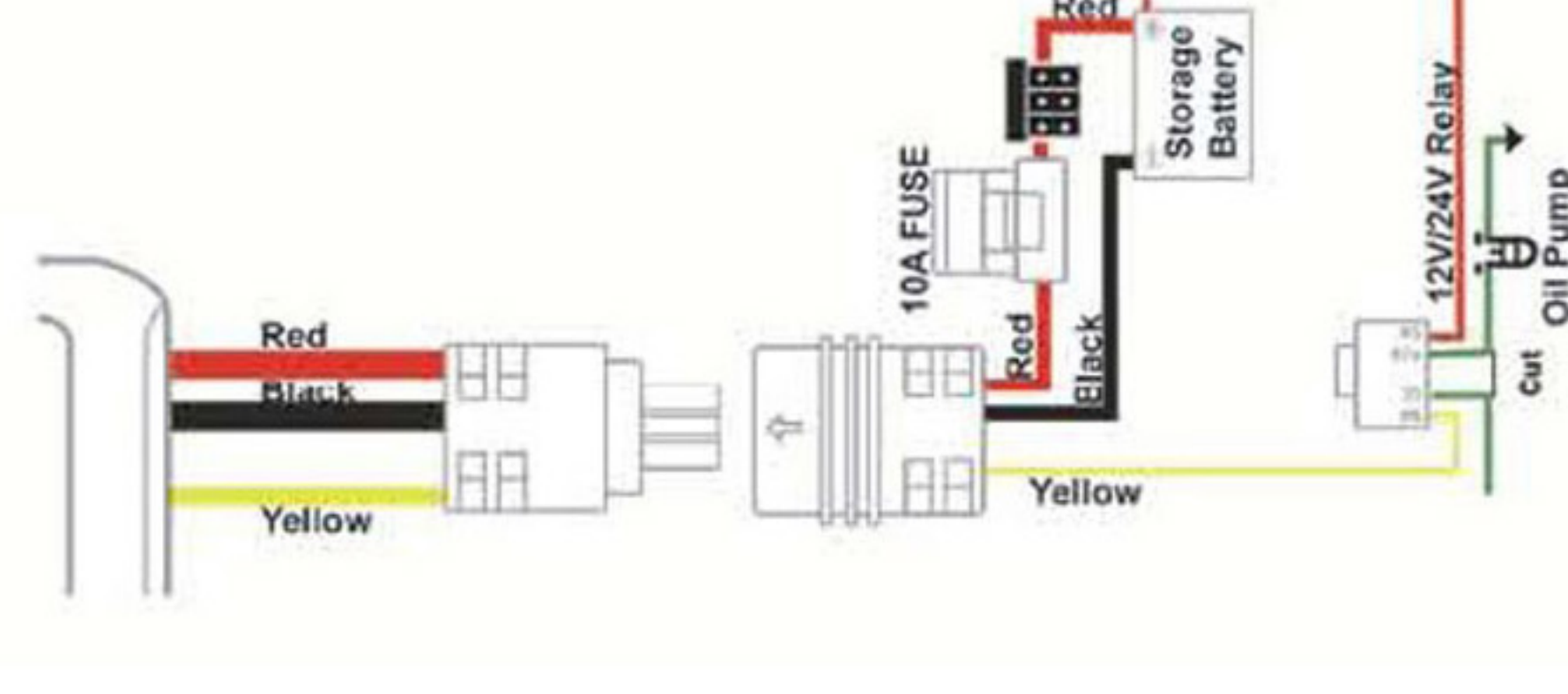
## Blue Indicator: GPS

Status of indicator	Meaning
Flash	GPS location successful
Continuously in bright status	GPS signal searching
Blue led off	Power off or in sleep mode

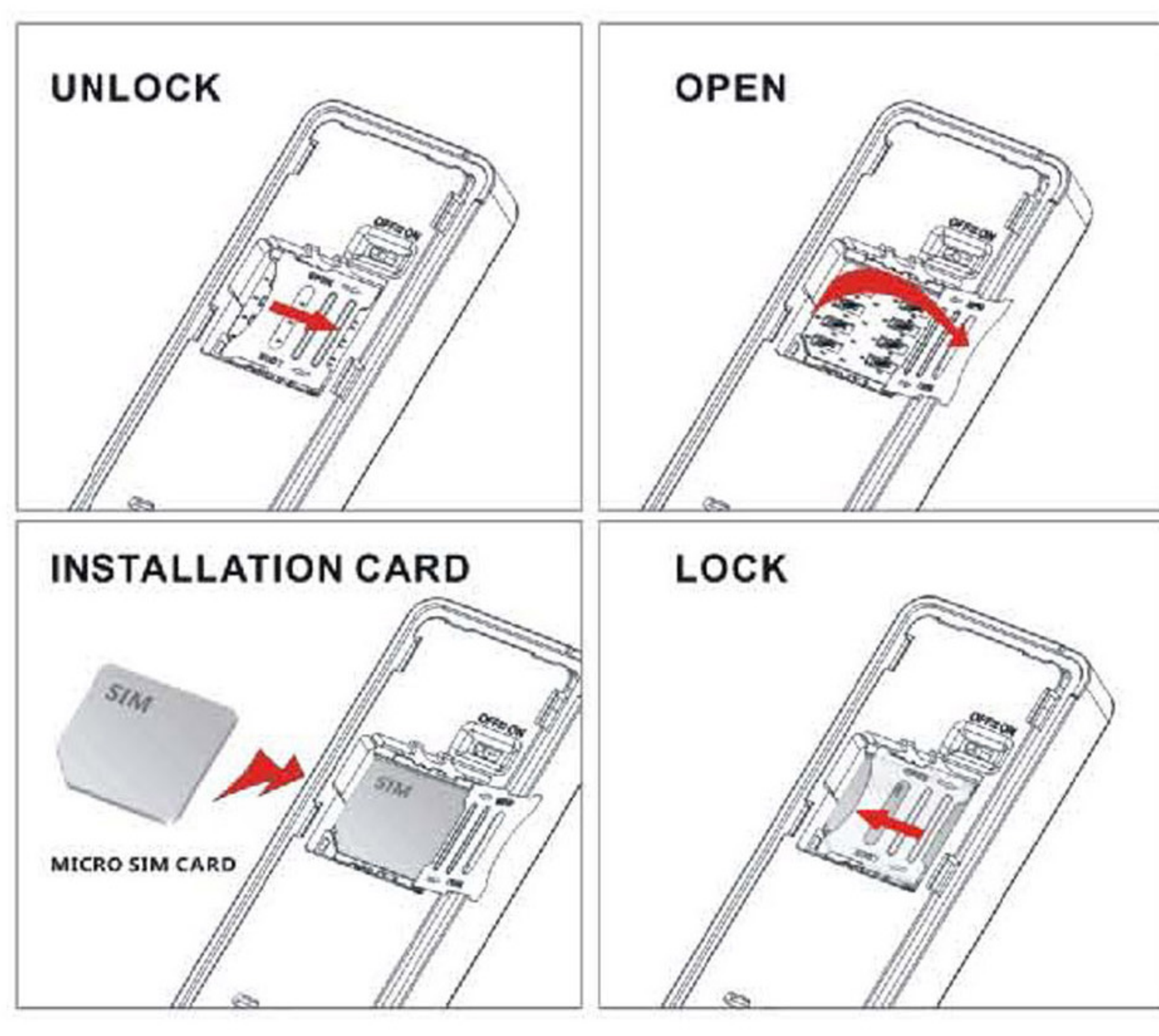
## Red Indicator: Power charge

Status of indicator	Meaning
Continuously in bright status	charging
Red led off	Power off or charged full

NOTE: Please connect the cable follow below pictures.



# 3 Start up



- Open the top, Insert a mini SIM card support GSM/GPRS network into the slot and make sure the chip side is down.
- Connect power cable and turn on the power button to on.
- Set admin number, by sending a SMS command to the SIM card inside device.  
For example: admin123456 +86186\*\*\*\*\* (+86186\*\*\*\*\* should be your phone number)
- Set APN: APN123456 CMNET (please use your local APN instead of CMNET, if you do not know the APN content, you should contact your SIM card supplier)

# 4 More Commands

Function	Command Format	Reply	Delete	for example
APN	apn+123456+space+content	apn ok		apn123456 cmnet
	apnuser+123456+space+content	apnuser ok		
	apnpasswd+123456+space+content	apnpasswd ok		
admin number	admin123456+space+admin phone number	admin ok	noadmin 123456	admin123456 186*****
time zone	timezone+123456+space+GMT No.	timezone ok		timezone123456 +1
Power save(default)	sleep123456 time	sleep time ok		
shock sleep	sleep123456 shock	sleep shock ok		
no sleep	sleep123456 off	sleep off ok		
upload frequency	upload123456+space+time	upload ok		upload123456 10
Cut and resume oil	555	Cut oil OK	666	
Arm&Disarm	111 or SF	Arm delay in 0s	000 or CF	
Position	G123456# or where	Google map		
Restart	rst	restart ok		
Back to factory	format	No reply		